

961087051-01-R1
Image of battery in manual not always representative of product purchased.
L'image de la pile indiquée dans le manuel n'est pas toujours représentative de celle du produit acheté.
La imagen de la batería del manual no siempre representa el producto adquirido.

USER MANUAL GUIDE DE L'UTILISATEUR MANUAL DEL USUARIO

BATTERY PILE BATERIA

© 2019 TECHTRONIC FLOOR CARE TECHNOLOGY LIMITED. ALL RIGHTS RESERVED.
CHARLOTTE, NC 28262
800-406-2005

IMPORTANT SAFETY INSTRUCTIONS SAVE THESE INSTRUCTIONS

TO BE USED WITH CHARGER BH05000

WARNING: READ AND UNDERSTAND ALL INSTRUCTIONS. Failure to follow the warnings and instructions may result in electric shock, fire and/or serious injury.

- This operator's manual contains important safety and operating instructions for ONEPWR™ Batteries.
- To prevent unintentional starting, ensure the switch is in the off-position before connecting to a battery pack, picking up or carrying the appliance. Carrying the appliance with your finger on the switch or energizing appliance that have the switch on invites accidents.
- Disconnect the battery pack from the appliance before making any adjustments, changing accessories, or storing appliance. Such preventive safety measures reduce the risk of starting the appliance accidentally.
- Recharge only with the charger specified by the manufacturer. A charger that is suitable for one type of battery pack may create a risk of fire when used with another battery pack.
- Use appliances only with specifically designated battery packs. Use of any other battery packs may create a risk of injury and fire.
- When battery pack is not in use, keep it away from other metal objects, like paper clips, coins, keys, nails, screws or other small metal objects that can make a connection from one terminal to another. Shorting the battery terminals together may cause burns or a fire.
- Under abusive conditions, liquid may be ejected from the battery; avoid contact. If contact accidentally occurs, flush with water. If liquid contacts eyes, additionally seek medical help. Liquid ejected from the battery may cause irritation or burns.
- Do not use a battery pack or appliance that is damaged or modified. Damaged or modified batteries may exhibit unpredictable behavior resulting in fire, explosion or risk of injury.
- Do not use a battery pack or appliance that is damaged or modified. Damaged or modified batteries may exhibit unpredictable behavior resulting in fire, explosion or risk of injury.
- Do not expose a battery pack or appliance to fire or excessive temperature. Exposure to fire or temperature above 265°F may cause explosion.
- Follow all charging instructions and do not charge the battery pack or appliance outside of the temperature range specified in the instructions. Charging improperly or at temperatures outside of the specified range may damage the battery and increase the risk of fire.
- Have servicing performed by a qualified repair person using only identical replacement parts. This will ensure that the safety of the product is maintained.
- Do not modify or attempt to repair the appliance or the battery pack except as indicated in the instructions for use and care.

⚠ WARNING! ⚠: RISK OF FIRE, PROPERTY DAMAGE, AND INJURY. NEVER EXPOSE YOUR BATTERY PACK OR CHARGER TO WATER, MOISTURE, OR FLUIDS, INCLUDING BUT NOT LIMITED TO CORROSIVE OR CONDUCTIVE FLUIDS, OR ALLOW FLUIDS TO FLOW INSIDE THESE ITEMS. Corrosive or conductive fluids, such as salt water, chlorine, certain industrial chemicals, and bleach or bleach containing products, etc., can cause a short circuit in the battery pack. If your battery pack is exposed to a corrosive or conductive fluid, do not attempt to use or charge the battery pack and immediately perform the following steps:

- Wear appropriate personal protective equipment, including eye protection and rubber gloves.
- Place your exposed battery pack in a large bucket, such as a 5 gallon or similar bucket, and fill the bucket with regular tap water. Do not place more than two packs in the bucket.
- Locate the bucket outdoors in an area inaccessible to children and pets and away from all buildings, garages/sheds, structures, vehicles, and combustible/flammmable materials.
- Leave the battery pack(s) in the bucket filled with tap water and call Customer Service at 1-800-406-2005 for additional instructions on the proper disposal of the exposed battery pack(s).

OPERATION

LITHIUM ION BATTERY PACKS

Lithium-ion batteries deliver fade free power for their entire run time. Lithium-ion products will not gradually lose power due to decreasing battery charge. Instead, power from the battery pack will drop from full to zero once the full charge has been drained from the battery. Once this happens, recharging of the battery is required. It is not necessary to drain the battery pack completely before recharging.

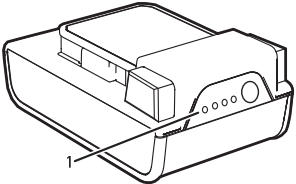


Figure 1 - Charge indicator lights

BATTERY PROTECTION FEATURES

Lithium-ion battery packs are designed with features that protect the lithium-ion cells and maximize battery life. If the product stops during use, release the trigger to reset and resume operation. If the product still does not work, the battery needs to be recharged.

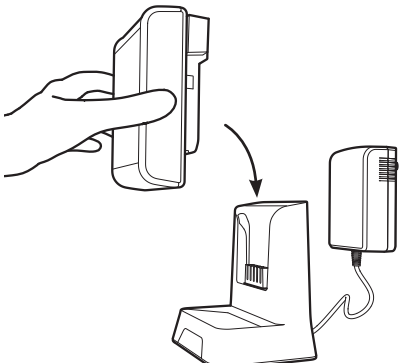
BATTERY FUEL GAUGE

To display the amount of charge left in the battery, press the charge level indicator button (see figure 1):

CHARGING THE BATTERY PACK

Battery packs are shipped in a low charge condition to prevent possible problems. Therefore, you should charge prior to first use. If the charger does not charge the battery pack under normal circumstances, return both the battery pack and charger to your nearest Authorized Service Center for electrical check.

- Charge the battery pack only with the recommended charger.
- Refer to charger operator's manual for charging instructions.
- During charging, the pack and ambient temperature should be between 41 to 86°F (5 and 30°C).
- The charger will sense if the pack, or ambient temperature, is too cold or too hot, and will return an error code (red flashing light) and not charge the pack.



CHARGING A HOT BATTERY PACK

When using a product continuously, the battery pack may become hot. A hot battery pack may be placed directly onto the charger port but charging will not begin until the battery temperature cools to within acceptable temperature range. When a hot battery pack is placed on the charger, the charger may indicate the pack is not ready to charge. Please refer to charger operator's manual. When the battery pack cools, the charger will automatically begin charging.

CHARGING A COLD BATTERY PACK

A cold battery pack may be placed directly onto the charger port but charging will not begin until the battery temperature warms to within acceptable temperature range. When a cold battery pack is placed on the charger, the charger may indicate the pack is not ready to charge. Please refer to charger operator's manual. When the battery pack warms, the charger will automatically begin charging.

BATTERY DISPOSAL WARNING: RISK OF EXPLOSION OR EXPOSURE TO TOXIC MATERIAL.

LITHIUM-ION BATTERIES

The battery must be collected, recycled or disposed of in an environmentally sound manner. The EPA certified RBRC Battery Recycling Seal on the lithium-ion (Li-ion) battery indicated Techntron Industries, a corporate affiliate of TTI Floor Care North America, is voluntarily participating in an industry program to collect and recycle these batteries at the end of their useful life, when taken out of service in the United States or Canada. The RBRC program provides a convenient alternative to placing used Li-ion batteries into the trash or the municipal waste stream, which may be illegal in your area. Please visit www.rbrc.org/call2recycle/ for information on Li-ion battery recycling and disposal bans/restrictions in your area. Our involvement in this program is part of our commitment to preserving our environment and conserving our natural resources.



QUESTIONS OR CONCERNS?

Contact us:

800-406-2005

Do not return to store. See behind the battery dock on the product for model number.

MAINTENANCE

These batteries have been designed to provide maximum trouble-free life. However, like all batteries, they will eventually wear out. Do not disassemble battery pack and attempt to replace the batteries. Handling of these batteries, especially when wearing rings and jewelry, could result in a serious burn.

For battery pack storage longer than 30 days:

- Store the battery pack where the temperature is below 80°F and away from moisture.
- Store battery packs in a 30%-50% charged condition.
- Every six months of storage, charge the pack as normal.

WARNING:

Upon removal, cover the battery pack's terminals with heavy-duty adhesive tape. Do not attempt to destroy or disassemble battery pack or remove any of its components. Batteries must be recycled or disposed of properly. Also, never touch both terminals with metal objects and/or body parts as short circuit may result. Keep away from children. Failure to comply with these warnings could result in fire and/or serious injury.

ACCESSORIES

Every ONEPWR battery works with every ONEPWR product.		Parts and Accessories:	
Battery:	Model #	Charger	BH05000
2.0 Ah	BH15020		
3.0 Ah	BH15030		
3.0 Ah MAX	BH25030		
4.0 Ah	BH15240		
4.0 Ah MAX	BH25040		
6.0 Ah	BH15260		

SERVICE INFORMATION & LIMITED WARRANTY FOR ONEPWR BATTERIES

THREE YEAR LIMITED WARRANTY (DOMESTIC USE)

If this product is not as warranted, contact TTI Floor Care North America Customer Service at 1-800-406-2005. Please have available the proof of purchase and model number for the warranted product.

WHAT THIS LIMITED WARRANTY COVERS: This limited warranty provided by Royal Appliance Mfg. Co., doing business as TTI Floor Care North America (referred to hereafter as "Warrantor") applies only to products purchased in the U.S. (including its territories and possessions), a U.S. Military Exchange, or Canada. When used and maintained in normal household use and in accordance with the Owner's Guide, your ONEPWR battery is warranted against original defects in material and workmanship for three years from the date of original purchase (the "Warranty Period"). If Warrantor determines that the issue you are experiencing is covered under the terms of this warranty (a "covered warranty claim"), we will, at our sole discretion and free of charge (subject to the cost of shipping), either (i) repair your product, (ii) ship you a replacement product, subject to availability; (iii) in the event that the applicable parts or replacement are not reasonably available, ship you a similar product of equal or greater value; or (iv) issue you a store credit (if applicable) or a refund of the actual purchase price at the time of the original purchase, as reflected on the original sales receipt. Parts and replacements may be new, refurbished, lightly used, or remanufactured, in Warrantor's sole discretion.

WHO THIS LIMITED WARRANTY COVERS: This limited warranty extends only to the original retail purchaser, with original proof of purchase from Warrantor or an authorized dealer of Warrantor products, in the U.S., U.S. Military Exchanges, and Canada.

WHAT THIS LIMITED WARRANTY DOES NOT COVER: This warranty does not cover use of the product in a commercial operation (such as maid, janitorial, and equipment rental services, or any other income-generating activity); improper maintenance of the product; the product if it has been subject to misuse, negligence, neglect, vandalism, or the use of voltages other than that on the data plate of this product. This warranty does not cover damage resulting from an act of God, accident, owner's acts or omissions, service of this product by other than Warrantor or a Warrantor authorized service provider (if applicable), or other acts beyond the control of Warrantor. This warranty also does not cover use outside the country in which the product was initially purchased, or resale of the product by the original owner. Pick-up, delivery, transportation, and house calls are not covered by this warranty. In addition, this warranty does not cover any product that has been altered or modified; repairs made necessary by normal wear; or the use of products, parts, or accessories which are either incompatible with this ONEPWR battery or adversely affect its operation, performance, or durability. Normal wear items (if applicable) are not covered under this warranty.

OTHER IMPORTANT TERMS: This warranty is not transferable and may not be assigned; any assignment made in contravention of this prohibition is void. This warranty shall be governed and construed under the laws of the state of North Carolina. The Warranty Period will not be extended by any replacement of batteries or parts or repair performed under this warranty.

THIS WARRANTY IS THE EXCLUSIVE WARRANTY AND REMEDY, AND ALL EXPRESS AND IMPLIED WARRANTIES OTHER THAN THE LIMITED WARRANTY SET FORTH ABOVE, INCLUDING IMPLIED WARRANTIES OF MERCHANTABILITY AND FITNESS FOR A PARTICULAR PURPOSE, ARE EXPRESSLY DISCLAIMED. IN NO EVENT WILL WARRANTOR BE LIABLE FOR ANY SPECIAL, INDIRECT, INCIDENTAL OR CONSEQUENTIAL DAMAGES OF ANY KIND OR NATURE TO OWNER OR ANY PARTY CLAIMING THROUGH OWNER, WHETHER BASED IN CONTRACT, NEGLIGENCE, TORT, OR STRICT PRODUCTS LIABILITY OR ARISING FROM ANY CAUSE WHATSOEVER. TO THE EXTENT PERMITTED BY APPLICABLE LAW, NO WARRANTIES THAT ARISE BY OPERATION OF LAW, IF APPLICABLE, SHALL EXCEED THE DURATION OF THE LIMITED WARRANTY PROVIDED HEREIN. Warrantor's liability for damages to you for any costs whatsoever arising out of this statement of limited warranty shall be limited to the amount paid for this product at the time of original purchase and Warrantor shall not be liable for any direct, indirect, consequential, or incidental damages arising out of the use of or inability to use this product.

Some states do not allow the exclusion or limitation of incidental or consequential damages, disclaimers of implied warranties, or limitations on the duration of implied warranties, so the above exclusions, disclaimers, and/or limitations may not apply to you. This warranty gives you specific legal rights, and you may also have other rights, which vary from state to state.

CONSIGNES DE SÉCURITÉ IMPORTANTES CONSERVEZ CES INSTRUCTIONS

DOIT ÊTRE UTILISÉ AVEC LE CHARGEUR BH05000

AVERTISSEMENT : LIRE ET COMPRENDRE TOUTES LES DIRECTIVES. Ne pas suivre les présentes directives peut entraîner une décharge électrique et (ou) des blessures graves.

- Ce manuel d'utilisateur contient des instructions de sécurité et de fonctionnement importantes pour les piles ONEPWR™.
- Pour prévenir les mises en marche non intentionnelles, assurez-vous que l'interrupteur est en position d'arrêt avant de connecter le bloc-piles, de prendre l'appareil ou de le transporter. Transporter l'appareil en conservant les doigts près de l'interrupteur et brancher l'appareil sur une source électrique lorsque l'interrupteur est en position de marche sont deux situations qui présentent des risques d'accident.
- Retirez le bloc-piles de l'appareil avant de faire un ajustement, de changer les accessoires ou d'entreposer l'appareil. Une telle mesure de précaution permet de réduire le risque que l'appareil se mette accidentellement en marche.
- Rechargez la batterie uniquement avec le chargeur indiqué par le fabricant. Le chargeur adéquat pour un type de bloc-piles présente un risque d'incendie s'il est utilisé avec un bloc-piles différent.
- Utilisez l'appareil uniquement avec un bloc-piles spécialement désigné à cet effet. L'utilisation de tout autre bloc-piles présente un risque de blessure et d'incendie.
- Lorsque le bloc-piles n'est pas utilisé, gardez-le à l'écart d'autres objets métalliques qui peuvent établir une connexion entre les deux bornes comme des trombones, des pièces de monnaie, des clés, des clous, des vis ou d'autres petits objets métalliques. Un tel contact court-circuitant entre deux bornes de la batterie présente des risques de brûlures ou d'incendie.
- Dans des conditions extrêmes, un liquide pourrait être expulsé de la batterie. En cas de contact accidentel, rincez les régions touchées avec de l'eau. En cas de contact avec les yeux, rincez-les avec de l'eau et demandez une assistance médicale. Le liquide expulsé de la batterie peut être une source d'irritation ou de brûlures.
- N'utilisez ni un bloc-piles ni un appareil endommagé ou modifié. Le fonctionnement des batteries endommagées ou modifiées peut être imprévisible et présenter des risques d'incendie, d'explosion ou de blessures.
- N'exposez pas le bloc-piles ou l'appareil au feu ou à une température excessive. L'exposition au feu ou à une température supérieure à 265 °F représente un risque d'explosion.
- Suivez toutes les instructions portant sur la recharge. Ne rechargez pas le bloc-piles ni l'appareil à des températures autres que celles indiquées dans ces instructions. Toute recharge à des températures hors de la plage indiquée présente des risques d'endommager la batterie en plus d'augmenter les risques d'incendie.
- Lorsqu'un entretien est nécessaire, confiez votre appareil à un réparateur qualifié qui n'utilisera que des pièces de rechange identiques aux pièces d'origine. Vous vous assurerez ainsi de préserver la sécurité de l'appareil.
- Ne modifiez ni l'appareil ni le bloc-piles, et ne tentez pas de les réparer, sauf dans la mesure indiquée dans les présentes instructions quant à leur utilisation et aux soins requis.

⚠ AVERTISSEMENT! ⚠: RISQUE D'INCENDIE, DE DOMMAGES MATÉRIELS ET DE BLESSURES. NE JAMAIS EXPOSER VOTRE BLOC-PILES OU VOTRE CHARGEUR À DE L'EAU, DE L'HUMIDITÉ OU DES LIQUIDES, Y COMPRIS, SANS S'Y LIMITER, DES LIQUIDES CORROSIFS OU CONDUCTEURS, NI LAISSER LES LIQUIDES S'INFILTRER DANS CES ARTICLES. Les liquides corrosifs ou conducteurs, comme l'eau salée, le chlore, certains produits chimiques industriels, les agents de blanchiment, les produits contenant des agents de blanchiment, etc., peuvent causer un court-circuit dans le bloc-piles. Si le bloc-piles est exposé à un liquide corrosif ou conducteur, ne pas tenter de l'utiliser ou de le charger. Effectuer immédiatement les étapes ci-dessous :

- Porter le matériel de protection individuelle approprié, dont des lunettes de protection et des gants en caoutchouc.
- Placer le bloc-piles exposé dans un grand seau, comme un seau de 5 gallons ou d'une capacité similaire, et le remplir d'eau du robinet. Éviter de placer plus de deux blocs dans le seau.
- Placer le seau à l'extérieur dans un endroit hors de la portée des enfants et des animaux, loin des bâtiments, des garages, des remises, des structures, des véhicules et des matériaux combustibles ou inflammables.
- Laisser le ou les blocs-piles dans le seau rempli d'eau du robinet et communiquer avec le service à la clientèle au 1 888 768-2014 pour obtenir des directives supplémentaires sur l'élimination adéquate du ou des blocs-piles exposé(s).

UTILISATION

CARACTÉRISTIQUES DE PROTECTION DE LA PILE

Les piles au lithium-ion offrent une puissance sans épuisement pendant toute la durée de fonctionnement. Les produits au lithium-ion ne perdront pas graduellement leur puissance en raison d'une diminution de la charge de la pile. L'alimentation du bloc-piles passera plutôt de totale à nulle une fois que la pile sera complètement déchargée. Lorsque cela se produit, la pile doit être rechargée. Il n'est pas nécessaire de décharger complètement le bloc-piles avant de le recharger.

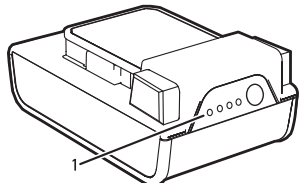


Figure 1 – Indicateur lumineux de charge

BATTERY PROTECTION FEATURES

Les blocs-piles au lithium-ion sont conçus avec des caractéristiques qui protègent les cellules aux ions de lithium et maximisent la durée utile de la pile. Si le produit s'éteint en cours d'utilisation, relâchez la gâchette pour réinitialiser et recommencez à utiliser le produit. Si le produit ne fonctionne toujours pas, la pile doit être rechargée.

INDICATEUR DE CHARGE

Pour afficher la charge restante du bloc-piles, appuyez sur le bouton indicateur du niveau de charge (voir la figure 1) :

RECHARGE DU BLOC-PILES

Les blocs-piles sont expédiés dans un état de faible charge pour prévenir les problèmes possibles. Par conséquent, vous devriez le recharger avant la première utilisation. Si le chargeur ne recharge pas le bloc-piles de façon normale, retourner le bloc-piles et le chargeur au centre de service autorisé le plus proche pour une vérification du système électrique.

- Rechargez le bloc-piles uniquement avec le chargeur recommandé.
- Veuillez consulter le manuel d'utilisation pour les instructions de recharge.
- Pendant la charge, le bloc et la température ambiante doivent être compris entre 41 à 86 °F (5 and 30°C).
- Le chargeur détectera si le bloc ou la température ambiante est trop froid ou trop chaud affichera un code d'erreur (voyant rouge clignotant) et ne chargera pas le bloc.

RECHARGE D'UN BLOC-PILES CHAUD

Si l'on utilise un produit en continu, le bloc-piles peut devenir chaud. Un bloc-piles chaud peut être placé directement sur le port du chargeur, mais la recharge ne débutera que lorsque la température diminuera à une plage de température acceptable. Lorsqu'un bloc-piles chaud est placé sur le chargeur, ce dernier peut indiquer que le bloc n'est pas prêt à être rechargé. Veuillez consulter le manuel d'utilisation du chargeur. Lorsque le bloc-piles refroidira, le chargeur commencera automatiquement la recharge.

RECHARGE D'UN BLOC-PILES FROID

Un bloc-piles froid peut être placé directement sur le port du chargeur, mais la recharge ne débutera que lorsque la température augmentera à une plage de température acceptable. Lorsqu'un bloc-piles froid est placé sur le chargeur, ce dernier peut indiquer que le bloc n'est pas prêt à être rechargé. Veuillez consulter le manuel d'utilisation du chargeur. Lorsque le bloc-piles se réchauffera, le chargeur commencera automatiquement la recharge.

